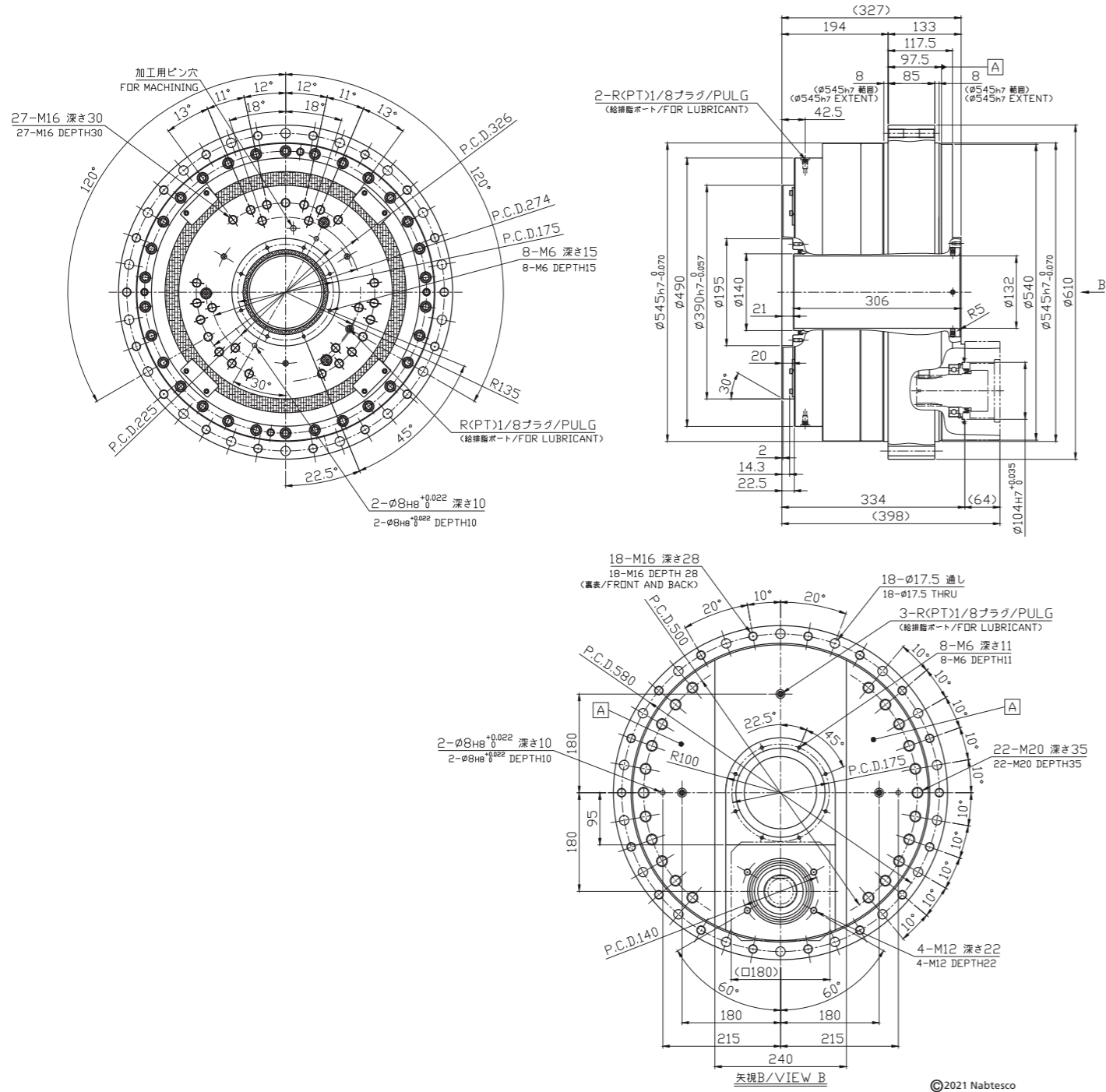


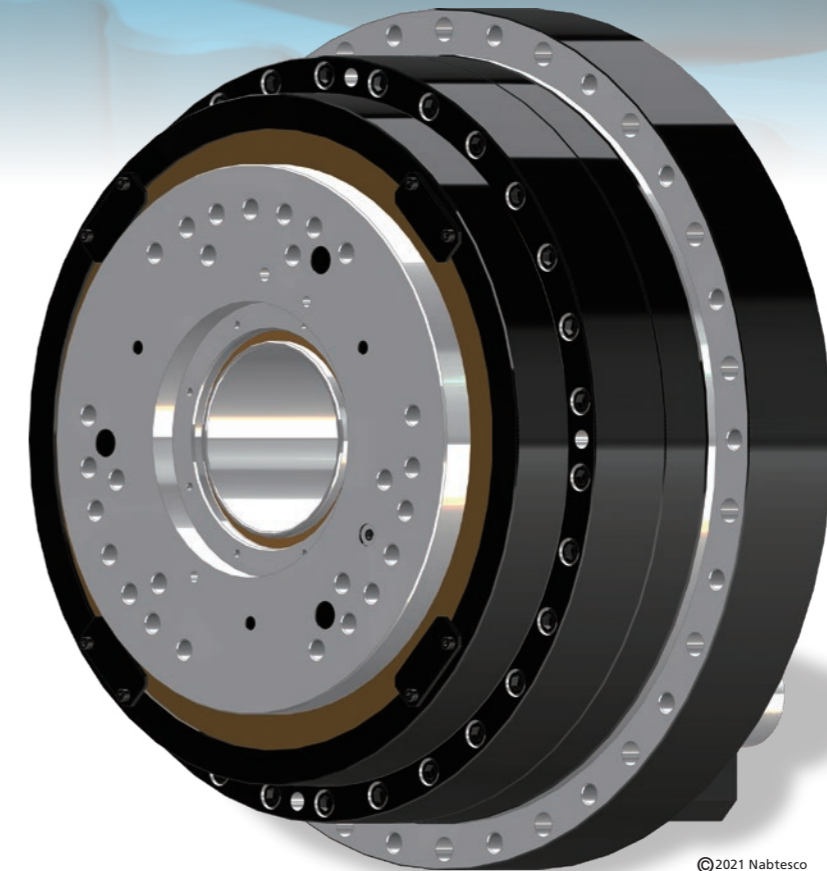
External dimensions



Precision Reduction Gear RV™

Gearhead

RH-900C



Nabtesco
Nabtesco Corporation
<https://precision.nabtesco.com/>



• Nabtesco and RV are registered trademarks or trademarks of Nabtesco Corporation.
• Specifications are subject to change without notice.
• Unauthorized reprinting, reproduction, copying, or translation of this catalog in whole or in part is strictly prohibited.

©2021 Nabtesco Corporation All rights reserved
CAT. 210701-Rev. 000 (Issued on July 1, 2021)

Europe and Africa

Nabtesco Precision Europe GmbH (Düsseldorf, Germany)
TEL: +49-211-173790 FAX: +49-211-364677 E-MAIL: info@nabtesco.de

North and South America

Nabtesco Motion Control Inc. (MI, USA)
TEL: +1-248-553-3020 FAX: +1-248-553-3070 E-MAIL: engineer@nabtescomotioncontrol.com

India

Nabtesco India Private Limited (Bangalore, India)
TEL: +91-80-4123-4901 FAX: +91-80-4123-4903 E-MAIL: Nti_pn@nabtesco.co.in

Asia and others

Nabtesco Corporation (Japan)
Nagoya Sales Office
TEL: +81-52-582-2981 FAX: +81-52-582-2987

Customer Support Center
TEL: +81-59-237-4672 FAX: +81-59-237-4697

E-MAIL: P_Information@nabtesco.com



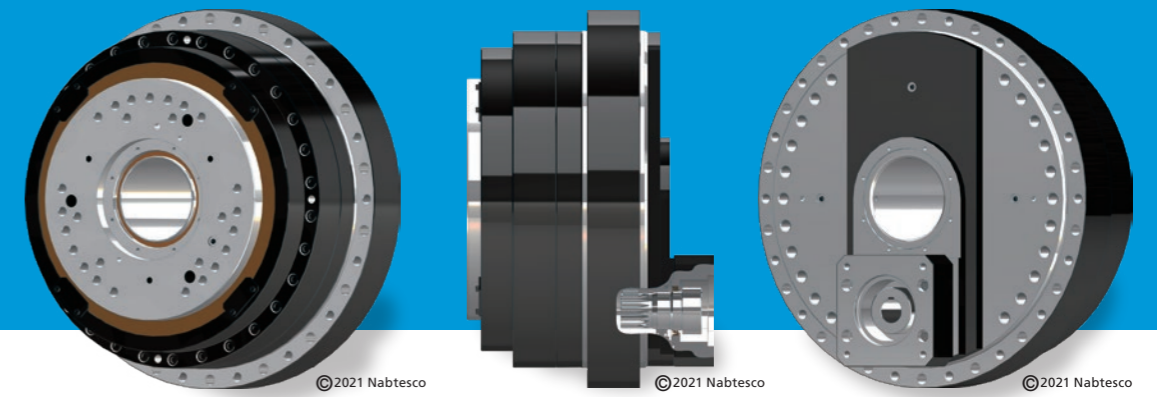
All new large hollow gearhead with high torque and high moment

Suitable for devices supported with one/both hands plus table units

Fits equipment perfectly to create a compact profile

Nabtesco

RH-900C



Features

- Delivers high torque from compact body**

This new gear supports class-maximum loads of up to 12 tons with a profile of just 398 mm, enabling major reductions in equipment widths.

- High precision, rigidity, reliability**

A maximum deviation of just 0.29 mm is maintained at a point one meter from the axis of rotation (backlash of 1.0 arc.min.).

- Preset with three standard types of reduction ratio**

The gear comes preconfigured with the following three reduction ratios: 186, 258, 330.

- Designed with large hollow diameter for easier routing of pipes and cables**

Hollow diameter (ø132 mm)

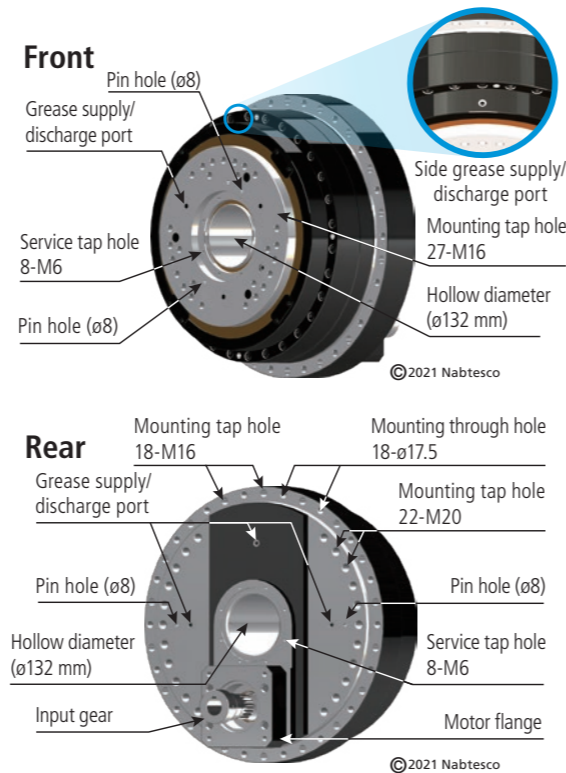
- Equipped with various mounting options for simpler system designing**

Both tap and through holes are available for mounting. Service tap and pin holes are also provided.

- Comes pre-filled with grease and is designed for easy replacement**

A grease supply/discharge port is located on each of the side, rear, and front.

- Can be used with external shaft motors of robots from various manufacturers**



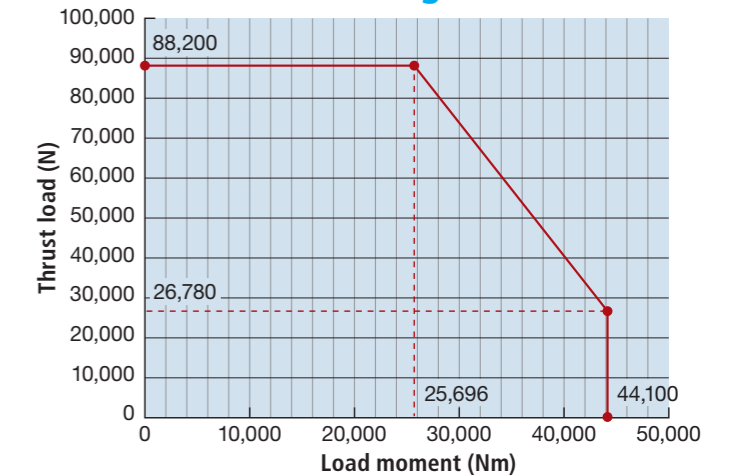
Specifications

Model	RH-900C
Speed ratio	186, 258, 330
Rated torque	8,820 Nm
Allowable acceleration/deceleration torque	22,050 Nm
Momentary maximum allowable torque	44,100 Nm
Rated output speed	15 rpm
Allowable output speed*1	15 rpm
Allowable moment	44,100 Nm
Momentary maximum allowable moment	88,200 Nm
Allowable thrust load	88,200 N
Backlash/Lost motion	1.0 arc.min.
Operating range	Endless
Weight*2	410 kg

*1. The allowable output speed may vary depending on the duty ratio, load, and ambient temperature.

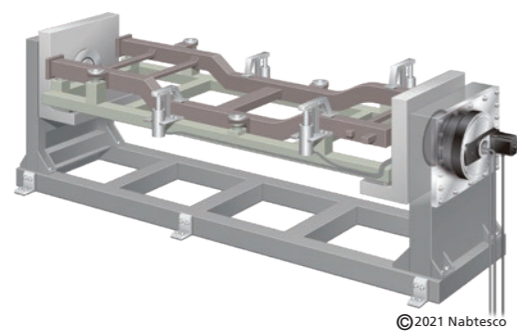
*2. The weight does not include the weights of the motor flange and input gear.

Allowable moment diagram

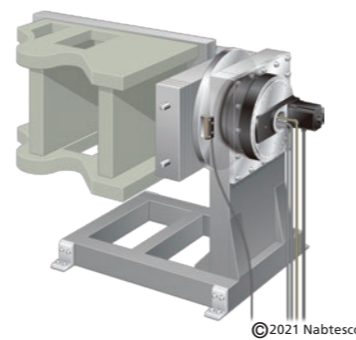


Note: When the load moment and the axial load are applied concurrently, ensure that the reduction gear is used within the corresponding allowable moment range, which is indicated in the allowable moment diagram.

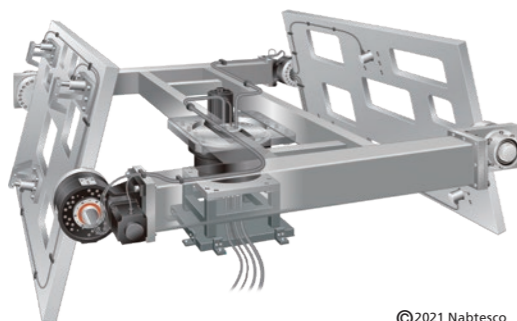
Application



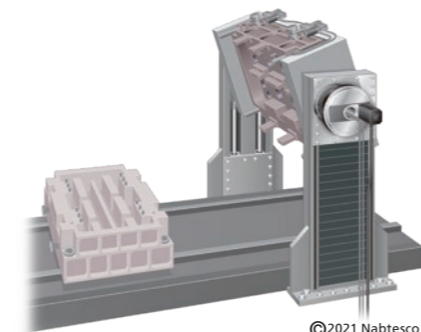
Suitable for long and large BBQ equipment that creates extremely high loads



Suitable for cantilever BBQ equipment for high loads



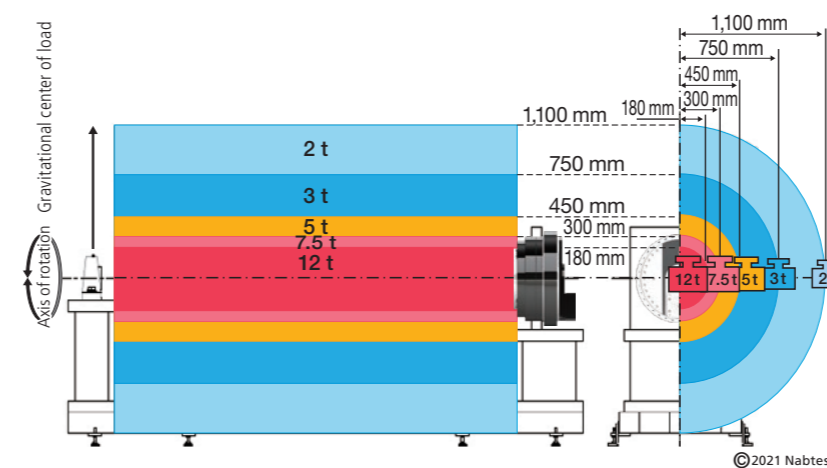
Suitable for construction of large index tables with ultra-low floors



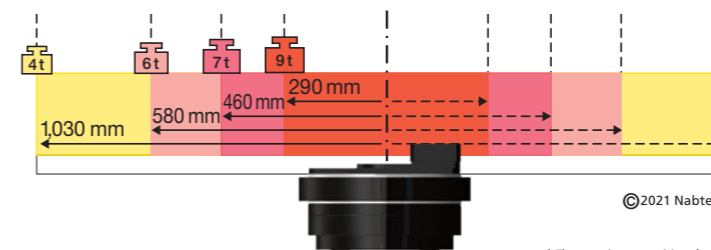
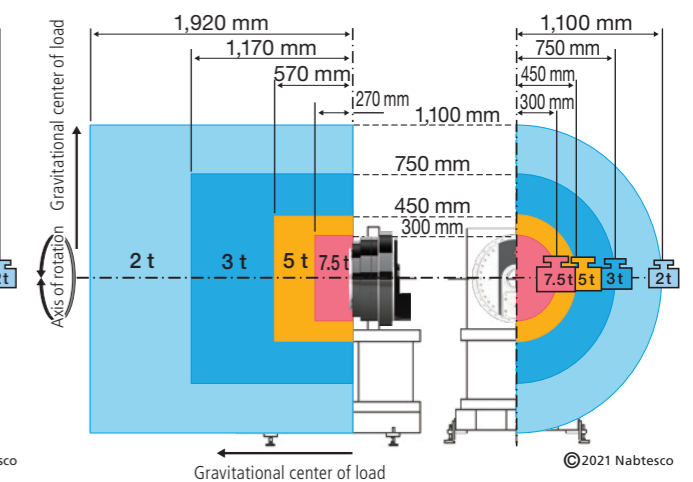
Suitable for mold reversing equipment

Carrying Capacity Based on Gravitational Center of Each Load

Supported with both hands



Supported with single hand



* The carrying capacities shown in this brochure are reference values only. The performance is not guaranteed.